

BACK-TO-BACK DRAWING

Format: Live or Virtual

Time: 20 Minutes

Number of Participants: Unlimited, but participants need to be in pairs

Goal: Enhance communication skills, practice active listening, and develop a deeper understanding of the impact of clear instructions and interpretation.

INSTRUCTIONS:

Assign
Groups:

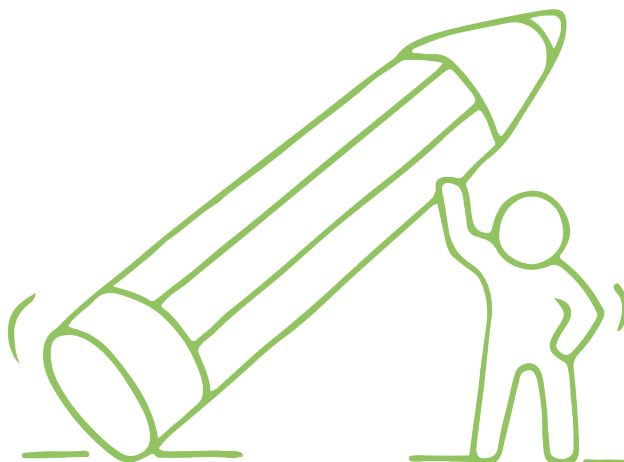
Divide your team into pairs.

Back-to-
Back setup:

Instruct each pair to sit back-to-back so they cannot see each other's actions or facial expressions. (Note: if virtual, they can turn their cameras off.)

Assign
Roles:

Designate one person as the "Describer" and the other as the "Drawer." Provide the Describer with an image consisting of shapes. You can determine the level of difficulty based on your objectives. Samples follow on the next two pages.



Give These Instructions:

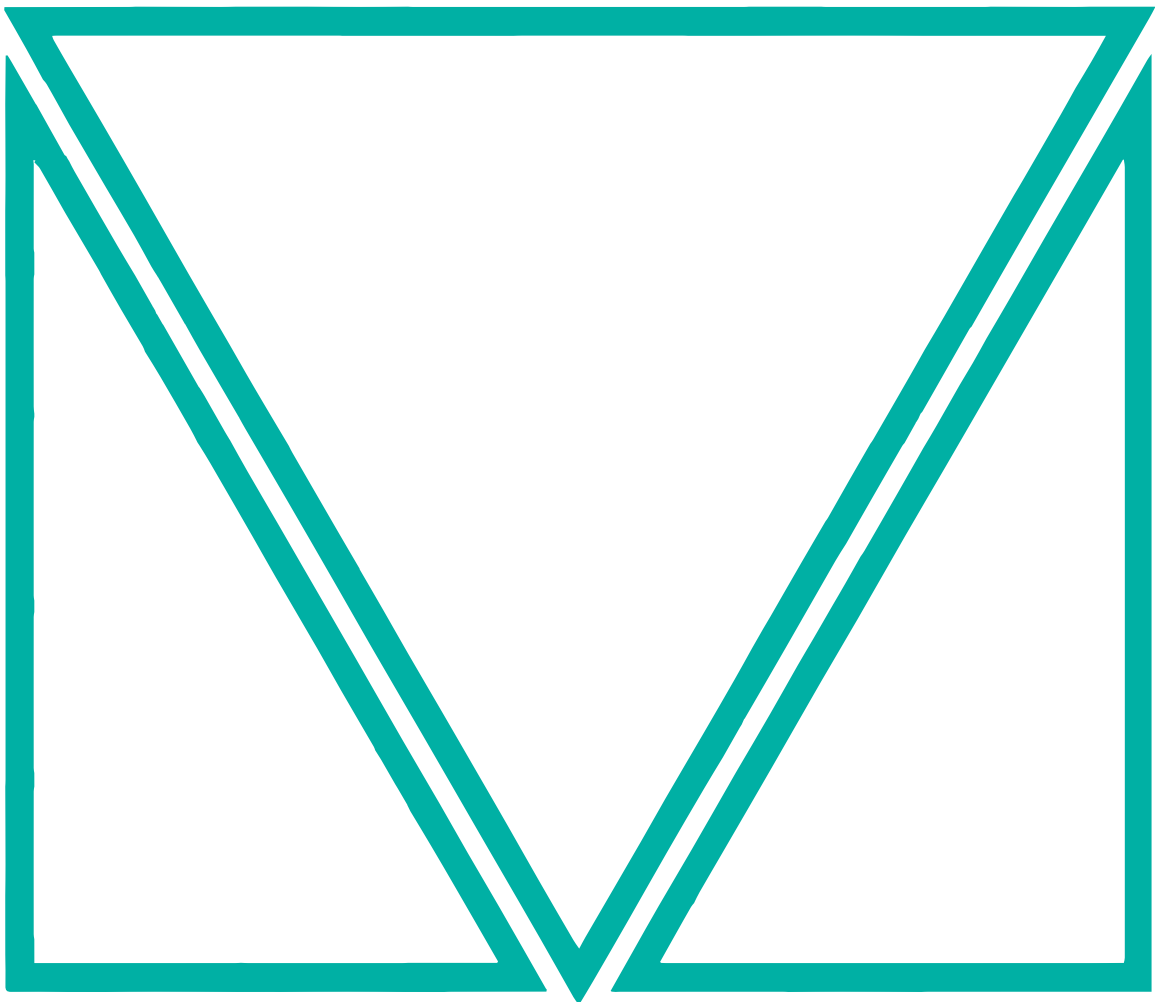
- 1 | Describe the shapes:** The Descriptor's task is to verbally describe the shapes to the Drawer without explicitly revealing what the shape is. Encourage the Descriptor to use descriptive language, provide instructions on the shape's attributes (e.g., angles, lines, curves), and guide the image.
- 2 | Draw the shapes:** The Drawer must listen attentively to the Descriptor's instructions and try to accurately replicate the described shape on the paper.
- 3 | Compare the images:** Once both partners feel they have completed the task, they should compare their drawings and discuss the similarities and differences between the original image and the recreated drawing.

Reflect and Discuss:

Engage the larger group in a conversation about their experience during the activity. Encourage them to share insights on the challenges they faced in conveying or interpreting instructions accurately. Discuss the importance of effective communication, active listening, and clarity in conveying information.



DIFFICULTY LEVEL 1:



DIFFICULTY LEVEL 2:

